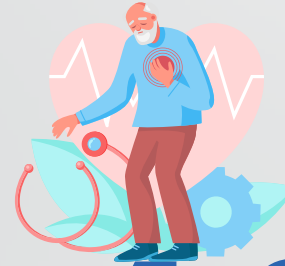


*in patients with multiple
risk factors for
multiple heart diseases*

Prasrix 10

Prasugrel Hydrochloride 10mg Tablets



Cardix Life Care™

INDICATIONS

Acute Coronary Syndrome

Coronary Artery Disease

Heart attack/stroke

Blood clots

✔ PRASUGREL belongs to the group of medicines called 'antiplatelet agents' used to prevent the formation of blood clots.

✔ Clot formation in the arteries that supply blood to the heart may cause reduced blood flow which could lead to unstable angina (chest pain).

✔ PRASUGREL contains 'Prasugrel' which inhibits blood platelet (tiny blood cells that form a blood clot and prevents bleeding) aggregation and activation.

✔ PRASUGREL works by inhibiting the clumping of platelets, thereby reducing the chance of having any blood clot formation.



Superior Combination in Managing Hypertension