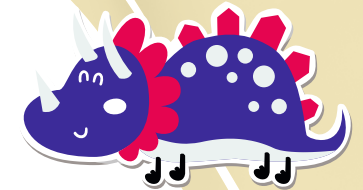






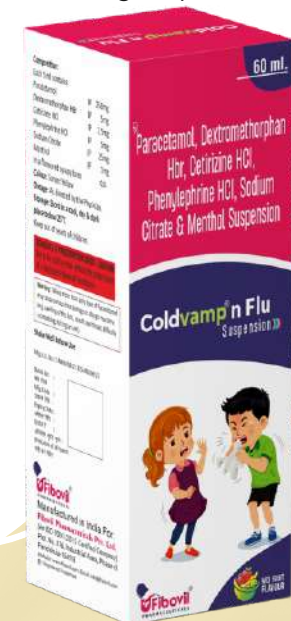


## Coldvamp N Flu

Paracetamol I.P. 250mg + Phenylephrine Hydrochloride I.P. 5mg + Cetirizine Hydrochloride I.P. 2.5mg + Sodium Citrate I.P. 25mg + Dextromethorphan Hydrobromide I.P. 5mg + Menthol I.P. 1mg Syrup



-  Paracetamol is an analgesic (pain reliever) and antipyretic (fever reducer). It blocks the release of certain chemical messengers in the brain that are responsible for pain and fever.
-  Phenylephrine is a decongestant which narrows the small blood vessels providing relief from congestion or stuffiness in the nose.
-  Cetirizine is an antiallergic which relieves allergy symptoms like runny nose, watery eyes and sneezing.
-  Sodium Citrate works by neutralizing excess acid in the blood and urine.
-  Dextromethorphan is a cough suppressant that relieves cough by reducing the activity of cough Centre in the brain.
-  Menthol Used to treat occasional minor irritation, pain, sore mouth, and sore throat as well as cough associated with a cold or inhaled irritants.



Allergic Rhinitis

Headache/Hives



Common Cold/Cough

Runny Nose/Watery Eyes